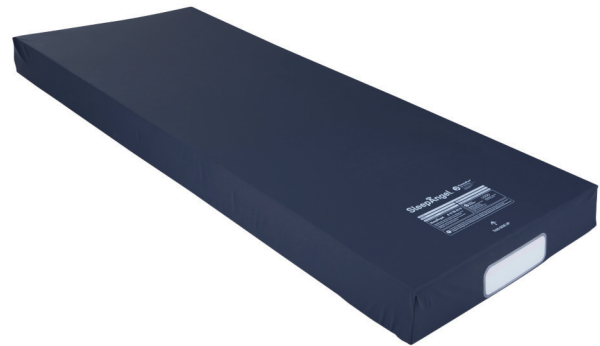


SleepAngel Medical Mattress

SleepAngel®

Contaminated soft surfaces (pillows, mattresses, etc.) largely contribute to the spread of hospital-acquired infections (HAIs), threatening the safety of patients and caregivers. Soft surfaces with PneumaPure® filter technology provide a reliable barrier against microbial contamination, enhancing safety in healthcare environments.



SleepAngel Mattress features

- Patented PneumaPure® filter technology allows airflow while blocking pathogens such as MRSA, C. diff, E. coli, coronavirus, and more.
- The hermetically sealed, waterproof exterior prevents pathogen ingress and makes soft surfaces easy to clean.
- The SleepAngel mattress and stretcher range is developed with focus on pressure area care (tissue viability) and infection prevention.

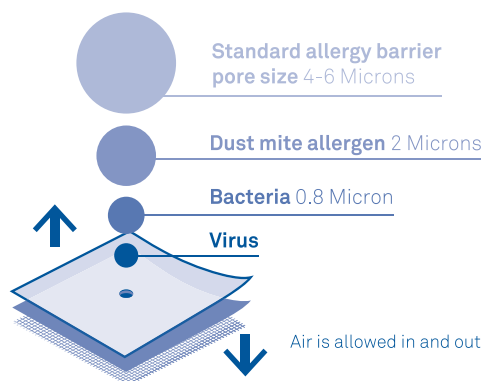
Addressing the following concerns

Infection Control

Safe Patient Handling

Pressure Injury Prevention

Sustainability



PneumaPure® Filter technology

“

SleepAngel Medical mattress does not become contaminated with pathogenic organisms and so is an important step forward in the elimination of bedding as a vector for cross-infection.

SleepAngel Mattress Features

SleepAngel Medical mattress range is designed by Dr. Duncan Bain, who is an expert in the field of support surface technology, material science and support surface design. The mattress addresses two key medical mattress setting criteria - pressure area care (tissue viability) and infection prevention and control.

The mattress range aligns with a clinical assessment of the patient's risk profile regarding the development of pressure sores. Foams are castle cut for enhanced pressure reduction and mattress flexibility on manual or powered adjustable beds. Mattress flexibility along with the supple finish of the cover textile help to minimise shear forces.

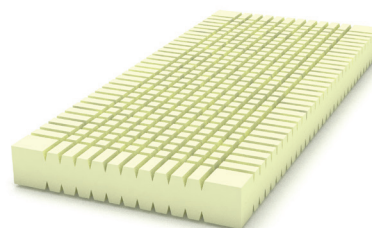
The mattress has been evaluated for:

- pressure distribution
- microclimate including heat and moisture
- vapour transfer rates
- durability

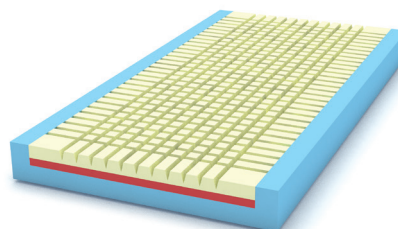
Inspection and cleaning

Inspect seams, fabric, and filters for any damage or holes; dispose of damaged products. Clean the mattress after each patient discharge or when soiled. Use a mild detergent solution, then disinfect per manufacturer guidelines. Allow to dry completely before reuse.

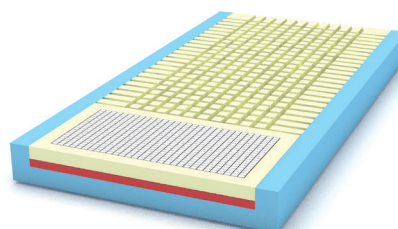
SleepAngel®



Low-Risk



Medium-Risk



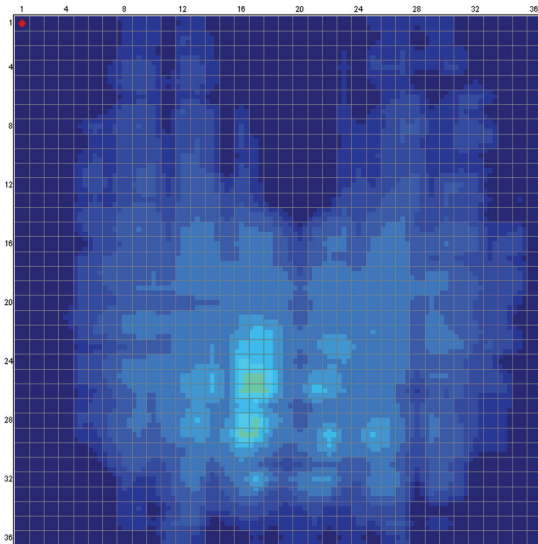
High-Risk

See more about detailed cleaning instructions:

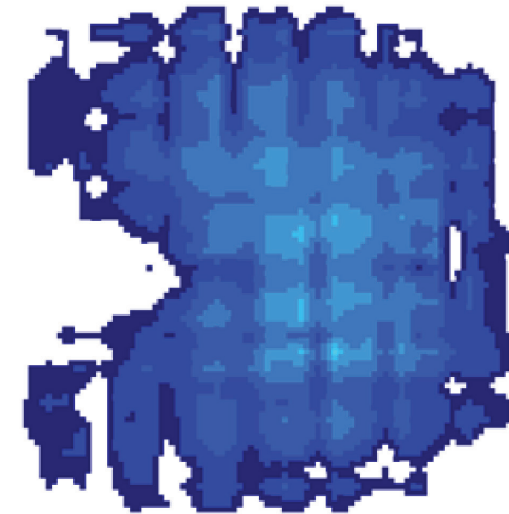
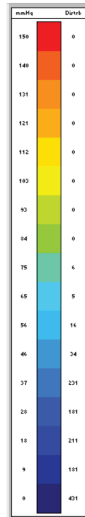


SleepAngel Medical Mattress Evaluation

SleepAngel®



SleepAngel Visco pressure map



SleepAngel Gel pressure map

The SleepAngel Mattress has been tested with the UCL Phantom (developed by the RAFT Institute).

The report adheres to a standard protocol for evaluation of static mattresses, as described in the document MHRA 03129-0 Pressure Reducing Mattresses, available from MHRA.

Mattress evaluation summary

- **Fully Sealed Design:** Mattress features welded seams with no stitching or zip access. Ventilation is ensured through a microbial filter, preventing contamination by pathogens and reducing the risk of bedding as a source of cross-infection.
- **Superior Pressure Relief:** The mattress demonstrates excellent pressure-reducing properties, ranking highly compared to other specialist static and anti-decubitus

mattresses. Standardized tests (MHRA 03129-0) confirm its effectiveness.

- **Comfort and Stability:** With low peak pressure values, a large contact area, and no bottoming out in seated positions, the mattress is well-suited for patients at risk of pressure ulcers, though regular repositioning is still necessary.
- **Effective Heat and Moisture Control:** The mattress allows for efficient heat and moisture transfer, minimizing risks of hot, sweaty skin that can lead to skin maceration, particularly beneficial in warmer climates.
- **Durability:** Fatigue testing indicates that the mattress can endure extended, heavy use without significant loss of performance, ensuring longevity and consistent quality.

Please contact us for detailed report.

Mattress Range

SleepAngel®

Name	SKU	Description
Low Risk Mattress Size (cm): 198x80x15 198x88x15	3060009 3060010	Fabric: Top: Polyurethane coated polyamide, Dark Blue 215 g/m ² . Bottom: Polyurethane coated polyamide, Anti-slip Grey 210 g/m ² . Four-way stretch. Filling: Castellated soft high resilience polyurethane foam. Weight: 10/11kg
Medium Risk Mattress Size (cm): 198x80x15 198x88x15	3060008 3060031	Fabric: Top: Polyurethane coated polyamide, Dark Blue 215 g/m ² . Bottom: Polyurethane coated polyamide, Anti-slip Grey 210 g/m ² . Four-way stretch. Top: Castellated soft memory foam. Middle part: Soft high resilience polyurethane foam. Side walls and base: Hard high resilience polyurethane foam. Weight: 12,5/14kg
High Risk Mattress Size (cm): 198x80x15 198x88x15	3060007 3060011	Fabric: Top: Polyurethane coated polyamide, Dark Blue 215 g/m ² . Bottom: Polyurethane coated polyamide, Anti-slip Grey 210 g/m ² . Four-way stretch. Filling: Top: Castellated soft memory foam. Gel inserted on heel area. Middle part: Soft high resilience polyurethane foam. Side walls and base: Hard high resilience polyurethane foam. Gel pad for heel area. Weight: 12/13,5kg

Additional sizes available per request.

Stretcher Range

SleepAngel®



Traditional stretcher pads posed challenges, as even the smallest damage to the outer cover required complete replacement for safety reasons. SleepAngel stretcher pads address this issue with an innovative, sustainable solution. Featuring a hermetically sealed, transparent inner core protected by an additional zipped outer cover, our design allows for easy inspection and replacement of the outer cover without discarding the inner foam. This ensures safety while reducing waste and supporting efficient hospital processes.

Name	SKU	Size (cm)	Description
Emergency Room Stretcher Mattress Weight: 7kg	6010007	188x68x10	Fabric: Transparent thermoplastic polyurethane 150g/m ² Filling: Top: Soft Memory Foam 40kg/m ³ . Middle part: Soft high resilience Polyurethane Foam 40kg/m ³ . Base: Hard high resilience Polyurethane Foam 45kg/m ³
Mattress cover separately Weight: 0,7kg	7010082	188x68x10	Zippered mattress cover fabric: Top: Polyurethane coated polyamide, Dark Blue 215 g/m ² . Bottom: Polyurethane coated polyamide, Anti-slip Grey 210 g/m ² . Four-way stretch.

Additional sizes available per request.

Superior Pressure Relief and Hygiene

An innovative mattress and stretcher range tailored for healthcare facilities



Fully Sealed Design

The mattress is fully sealed with welded seams, lacking any stitching or zip access, and uses a microbial filter for ventilation. Keeps the core of the mattress free from pathogens, reducing infection risks and ensuring a hygienic environment.

Superior Pressure Relief

Built with advanced pressure-reducing properties that have been tested against industry standards (MHRA 03129-0). Providing optimal support for at-risk patients, helping prevent pressure sores and enhancing comfort compared to other specialized mattresses.

Enhanced Comfort and Stability

Low peak pressure values, extensive contact area, and no 'bottoming out' in seated positions ensure comfort and stability for extended use, making it ideal for patients needing prolonged bed rest.

Effective Heat and Moisture Control

Designed for excellent heat and moisture transfer properties. Maintains skin health by keeping users cool and dry, even in warmer climates, reducing skin breakdown and discomfort.

Exceptional Durability

Proven to withstand long-term, heavy use without performance degradation. Reliable over time, offering long-lasting quality and value, even with frequent use in demanding healthcare environments



Contact

SleepAngel Medical is produced by Gabriel Scientific

 www.sleepangel-medical.com

 info@sleepangel-medical.com